



item

Systematic innovation.

New Products Autumn 2011



MB Building Kit System – systematic innovation.

It's brand new – an item profile that is entirely non-metallic. item now offers a Profile 8 and Tube D30 for special applications that are made entirely of an innovative material comprising 70 percent wood and 30 percent plastic. As a result, users can now build constructions that do not conduct electricity or affect the radio frequency range. This opens up entirely new application areas for the MB Building Kit System, since the new Profiles KH (KH stands for “Kunststoff” and “Holz”, the German for “plastic” and “wood”) are of course fully compatible with the entire item product range.

The appropriate fastening technology is also available for the new Profile KH 8 40x40. The Standard-Fastening Set KH 8 is entirely concealed in the profile groove and is incredibly easy to fit. The self-tapping screw is driven directly into the profile. Angle Bracket 8 PA also supports Profiles and can be easily moved, making it the ideal temporary fastener.

Profile line 10 is also continuing to expand. Flat and therefore light Profiles 10 are now available for new applications. The range of components for building doors and panel fastenings has also been significantly extended. For example, Panel-Clamping Strip 10 allows users to retrofit a panel into a closed profile frame. The panel element is anchored in the profile groove with an aluminium strip and fixed in place with a flexible plastic strip.

The new swivel castors with integrated connecting plates get goods from A to B faster, as they can be screwed directly to Profiles 8 and 10 without the need for any additional accessories. The variable three-hole perforations in the connecting plate open up a range of assembly options. The new Castor Support 8 80x40 also keeps things running smoothly. Its stable housing and low construction height are ideal for building movable frames with a low centre of gravity for greater stability. And built-in flexible plastic impact



protection prevents scratches and dents.

item has three practical new products for smart cable conduits: Conduit Inside Corners create a gentle angle to guide cables around bends, thus preventing kinks. Sharp cut edges are also covered, which protects cable sheaths and prevents cables being damaged as they are pulled through the conduits. Better edge protection has also been introduced for the openings of cable conduits. Cable Entry Protectors and Conduit Caps stay in place even when cables are pulled through or additional cables are introduced. A section of the screwed Conduit Caps always stays connected to the conduit, even when the Lid Profile is removed. This ensures cables can be laid as and when necessary and that (re)sealing the conduits is easy.

The new MB products at a glance:

-  **04** Profile KH 8
-  **10** Profile 10 50x20 E
-  **12** Central-Fastening Set 10
-  **14** Panel-Clamping Strips 10
-  **16** Hinges 10 Al light
-  **18** Castor D100 swivel and Castor D125 swivel with Connecting Plate
-  **22** Bracket 8 120x40 flat
-  **24** Conduit Inside Corners, Conduit Caps and Cable Entry Protectors
-  **28** New to **Line D30** – new options for lean production



Metal-free profile – 100% item.

Innovative material made of wood and plastic

Lightweight and strong

Electrically insulating



Profile KH 8 40x40

The metal-free alternative in the item MB Building Kit System. An innovative, high-strength material that is particularly easy to process.

Profile KH 8 40x40 is made from environmentally friendly material (more than 70% wood fibre) and has exactly the same design as the equivalent item aluminium profile. As a result, it is fully compatible with all attachments and can also be combined with other building kit system elements. The Profile 8 groove can accommodate all fastening elements and enables users to insert panels directly into profile frames.

A top-quality innovative material. The combination of thermoplastic and renewable raw materials offers the best of both worlds. Solid-coloured in elegant anthracite grey with a smooth plastic outer surface. Moisture resistant, dimensionally stable and strong – the ideal basis for lightweight applications. Thanks to ease of processing (the material is cut and drilled like conventional wood) and special, adapted fastening elements, no special machines or tools are needed when working with the new profiles.

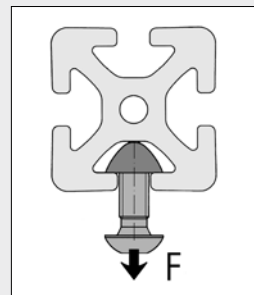
When a construction has to be lightweight, when electrical insulation is a requirement or when a particularly low-cost solution from the building kit system is needed, Profile KH is the answer.

The profile is also ideal for use with laboratory equipment for EMC measurements and when building shelving, table frames, guards and enclosures.



Profiles KH 8 are connected using a special Standard-Fastening Set or Angle Bracket Sets 8 PA. Cap 8 40x40 seals off the profile end face.

Physical properties of material KH	
Modulus of elasticity in extension	9900 N/mm ²
Tensile strength	43 N/mm ²
Tensile elongation at failure point	1.2 %
Modulus of elasticity in bending	7000 N/mm ²
Flexural strength	77 N/mm ²
Heat distortion temperature	+100/-15 °C
Water absorption 1d	Volume swelling: 1.16 % Mass swelling: 3.08 %
Acid resistance (dil.)	+
Alkali resistance (dil.)	+

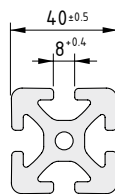


F = 750 N

Permissible tensile load F on the groove flanks. This nominal load incorporates safety factors ($S > 2$) that act against deformation and fracturing.



The wood used in Profile KH 8 is sourced from sustainably managed forests. It carries the PEFC label. Further information is available at: www.pefc.co.uk.



Profile KH 8 40x40



Wood-PP composite

A [cm ²]	m [kg/m]	I _x [cm ⁴]	I _y [cm ⁴]	W _x [cm ³]	W _y [cm ³]	
9.21	1.06	14.70	14.70	7.04	7.04	
anthracite, cut-off max. 6000 mm						0.0.641.61
anthracite, 1 pce., length 6000 mm						0.0.626.86



Strong but never seen.



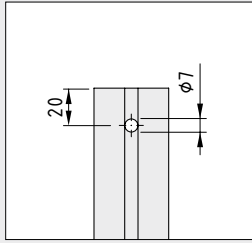
Standard-Fastening Set KH 8 Button-Head Screw KH 8x55, TX 30

The special fastening techniques for Profile KH 8 40x40 require little processing work and use self-tapping screws that are driven into the core bore of the profile. Only a through hole for the tool (TX 30; \varnothing 7 mm) specifies the location of the connecting point.

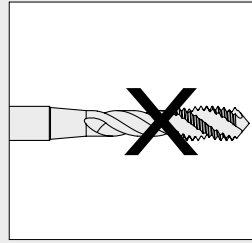
Standard-Fastening Set KH 8 is entirely concealed in the profile groove – maximum integration ensures no space is wasted and creates clean, clear lines for an elegant construction.

The Button-Head Screw is also available separately for fastening attachments to the core bore of Profile KH.

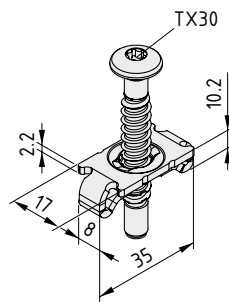




Position of the through holes for the key TX 30



Quick-action profile connection thanks to self-tapping screw.



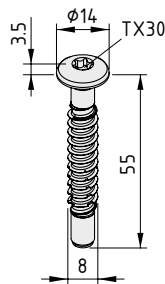
Standard-Fastening Set KH 8

8

1 standard connecting plate 8, St
 1 Button-Head Screw KH 8x55, TX 30, St
 $M_{\text{bright zinc-plated}} = 10 \text{ Nm}$ $m = 27.0 \text{ g}$

bright zinc-plated, 1 set

0.0.642.18



Button-Head Screw KH 8x55, TX 30

St
 $m = 16.0 \text{ g}$

bright zinc-plated, 1 pce.

0.0.642.17



Stop and go.

Holds profiles with no additional machining

Ideal as a temporary fastening

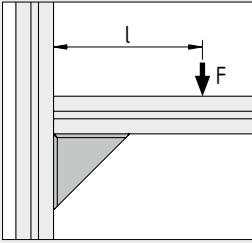


Angle Bracket 8 PA

The flexible machining-free profile fastening. Using the Angle Bracket ensures constructions can be easily reconfigured, as it does not need to be permanently fixed in one place.

Because Angle Brackets reinforce fastening points, they are particularly useful in applications that are likely to involve bending loads.

Angle Bracket Sets 8 PA include all the necessary fastening materials for joining two Profiles KH.

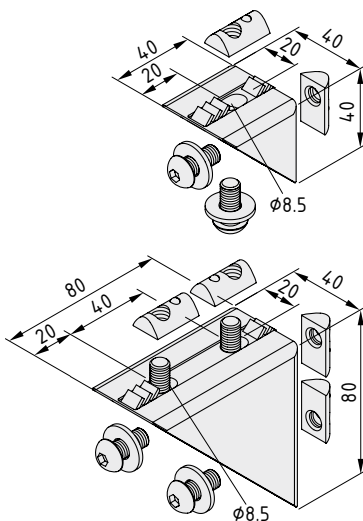


Angle Bracket 8	40x40 PA	$F < 200 \text{ N}$	$\wedge F \times l < 10 \text{ Nm}$
Angle Bracket 8	80x80 PA	$F < 400 \text{ N}$	$\wedge F \times l < 30 \text{ Nm}$

The load-carrying capacity is to be checked based on both conditions.



Angle Brackets PA come with removable anti-torsion features, meaning that attachments without a profile groove can also be screw-connected with ease.



Angle Bracket Set 8 40x40 PA



Angle Bracket 8 40x40 PA, black
 2 Button-Head Screws ISO 7380-M8x18, St, bright zinc-plated
 2 washers 9x20x2, St, bright zinc-plated
 2 T-Slot Nuts 8 St M8, bright zinc-plated
 m = 53.0 g

1 set

0.0.647.03

Angle Bracket Set 8 80x80 PA



Angle Bracket 8 80x80 PA, black
 4 Button-Head Screws ISO 7380-M8x18, St, bright zinc-plated
 4 washers 9x20x2, St, bright zinc-plated
 4 T-Slot Nuts 8 St M8, bright zinc-plated
 m = 177.0 g

1 set

0.0.647.05



Rock-steady.



Profile 10 50x20 E

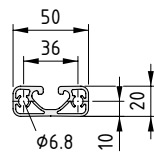
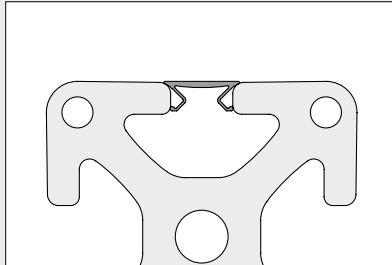
Cap 10 50x20

Line 10 continues to grow. The addition of Profile 10 50x20 E enhances the line with a universal profile that is compatible with all types of fastening solution, offers a flat cross-section and can be easily incorporated into constructions. The Profile 10 groove leaves all options open when it comes to fastening techniques and provides the perfect hold for all fastening elements.

Caps ensure added safety at the profile end.

Cover Profile 10 AI

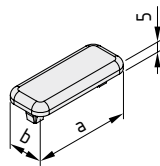
Whenever it is especially important that constructions are easy to keep clean or look good, Cover Profile 10 AI neatly closes over the groove, either along individual sections or the entire length of the profile.



Profile 10 50x20 E

Al, anodized

A [cm ²]	m [kg/m]	I _x [cm ⁴]	I _y [cm ⁴]	W _x [cm ³]	W _y [cm ³]	
3.69	0.99	1.70	9.08	1.70	3.63	
natural, cut-off max. 6000 mm						0.0.632.54
natural, 1 pce., length 6000 mm						0.0.632.53

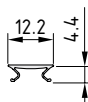


Cap 10 50x20

PA-GF

a = 50 mm b = 20 mm m = 4.0 g

black, 1 pce.	0.0.632.55
grey similar to RAL 7042, 1 pce.	0.0.632.56



Cover Profile 10 AI

Al, anodized
m = 40 g/m

natural, 1 pce., length 2000 mm	0.0.632.63
---------------------------------	------------



Keeping the groove open.

Groove remains open for panel elements

Stable profile connection

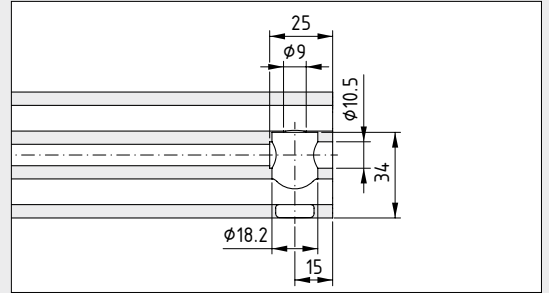
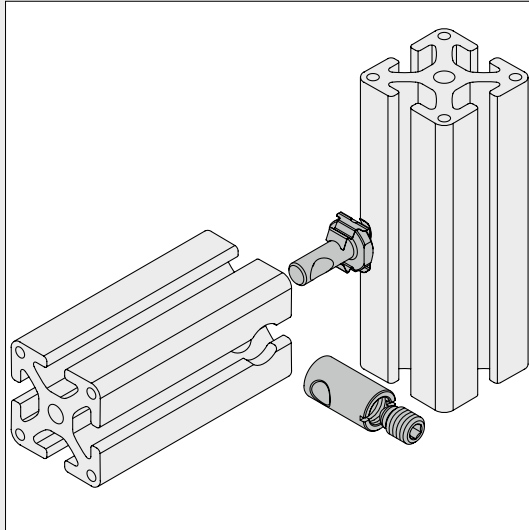


Central-Fastening Set 10

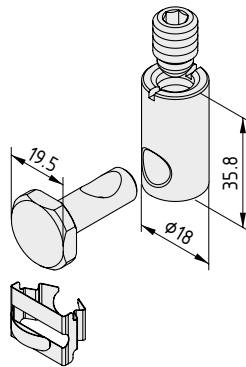
Central-Fastening Set 10 fastens Profiles 10 at right angles to each other, so that the grooves that are facing each other are completely free. This is useful when the profile grooves are to accommodate a panel element. It also eliminates the need to specially machine the corner areas of the panel element, which instead can be inserted directly into the grooves.

Step Drill D18.2

This Step Drill creates the side profile bore for Central-Fastening Set 10 – quick and reliable machining for especially economical profile connection.



The profile to be connected via its end face needs to be machined before the Central-Fastening Set can be used. The bore should be produced with Step Drill D18.2 (0.0.632.75).



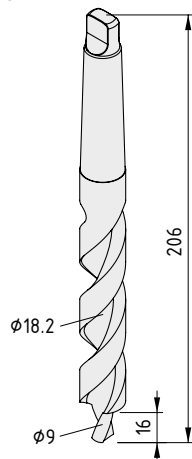
Central-Fastening Set 10



Clamping pin, St, bright zinc-plated
 Spring element, St, stainless
 Sleeve with bore, St, bright zinc-plated
 Grub screw M12, St, bright zinc-plated
 M = 22 Nm m = 87.0 g

bright zinc-plated, 1 set

0.0.632.74



Step Drill D18.2 Central-Fastening Set 10



High-performance, high-speed steel, nitrided
 Taper shank DIN 228-MK-B2 AT6
 m = 244.0 g

1 pce.

0.0.632.75



A secure hold.

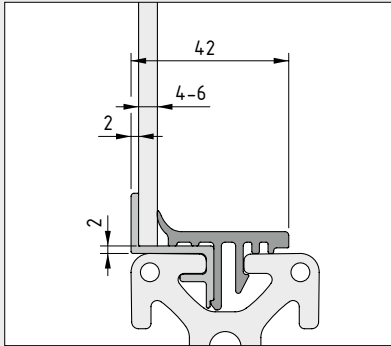


Panel-Clamping Strips 10

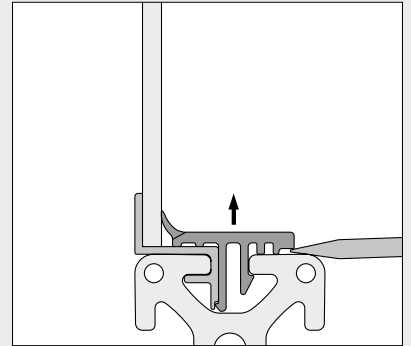
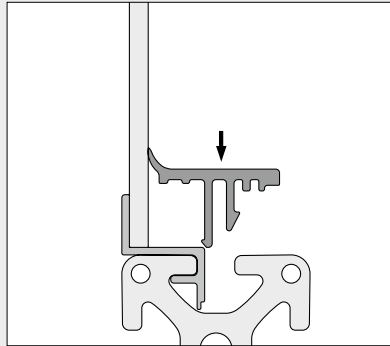
Simply retrofit a panel into a closed profile frame.

Panel-Clamping Strips 10 are ideal for retrofitting panel elements (preferably made of Acrylic Glass, PET-G or Polycarbonate) into a closed profile frame. Apart from straight saw cuts, no further machining of the panel element or Panel-Clamping Strips is required if the profile frame is connected with Central-Fastening Sets 10.

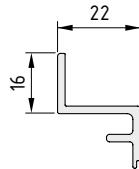
The Panel-Clamping Strip consists of two components. The first of these, an aluminium strip, locates into the profile groove and holds the panel element in place. A second strip, of flexible plastic, is then used to secure both the panel element and the aluminium strip in the groove. If necessary, the plastic strip can be levered out in order to remove the panel element from the frame.



The Panel-Clamping Strips secure the panel element so that it is offset from the outer edge of the profile by 2 mm. This produces a smooth outer wall for protective enclosures and helps reduce turbulence caused by air flows.



A screwdriver is used to lever out the Panel-Clamping Strip so as to enable removal of the panel element from the frame.



Panel-Clamping Strip 10 Al



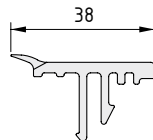
Al, anodized
m = 306 g/m

natural, cut-off max. 3000 mm

0.0.632.89

natural, 1 pce., length 3000 mm

0.0.632.88



Panel-Clamping Strip 10 4-6mm



PP/TPE
m = 178 g/m

grey similar to RAL 7042, 1 pce., length 3000 mm

0.0.632.90



Turning on a pin.



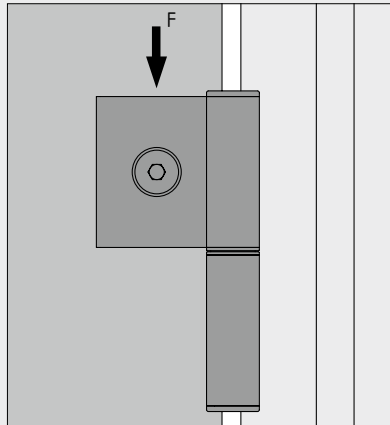
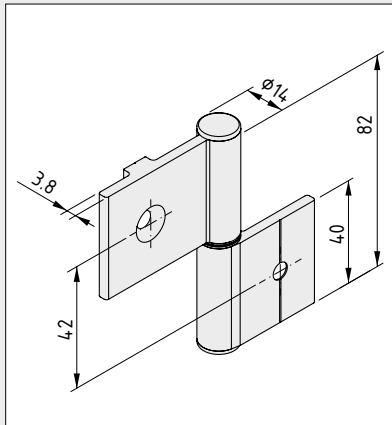
Hinges 10 Al light

The perfect hinge for Line 10. Hinges Al light are adjustable, strong and versatile. Two versions are available: Version FP4 is intended for installing frameless panel elements in a Line 10 profile frame, while version PP4 connects together two profiles, spacing them 4 mm apart and ensuring they can move easily.

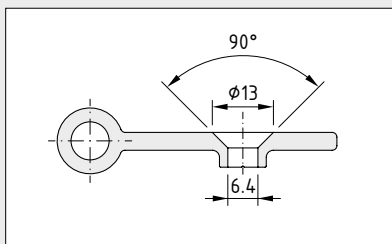
The hinges always come with all necessary fastening elements for the profile – the only thing left to decide is whether the door should open to the left or right. Hinges with various load-carrying capacities can be created depending on the Hinge Pin used.

Would you like to be completely free to design precisely the hinge you need? Line 10 now has a solution that helps you achieve just that:

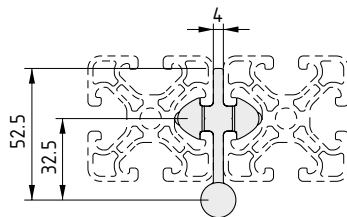
The Hinge Leaf Profiles and Pin Set D6 (0.0.621.16) which are available separately can be combined to produce made-to-measure hinges that are perfectly tailored to the given requirements.



F = 500 N



The Hinge Leaf Profiles can be given a drilled hole or countersink for screw fastening. The correct position of the hole is identified by a marking notch on the rear of the hinge.



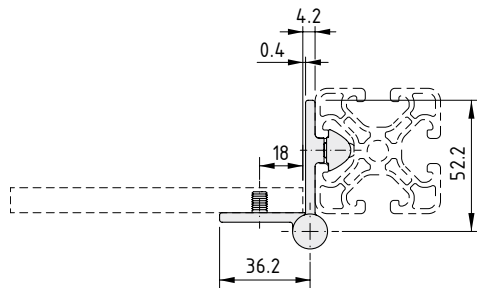
Hinge 10 AI PP4 light



Hinge leaves, Al, anodized, natural
 2 T-Slot Nuts 10 St M6, bright zinc-plated
 2 Countersunk Screws DIN 7991-M6x18, St, bright zinc-plated
 Hinge Al light, Pin Set D6
 Notes on Use and Installation
 m = 144.0 g

1 set

0.0.632.86



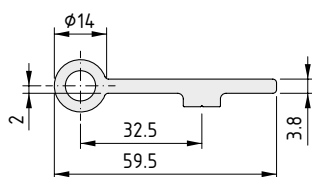
Hinge 10 AI FP4 light



Hinge leaves, Al, anodized, natural
 2 T-Slot Nuts 10 St M6, bright zinc-plated
 Countersunk Screw DIN 7991-M6x12, St, bright zinc-plated
 Countersunk Screw DIN 7991-M6x18, St, bright zinc-plated
 Hinge Al light, Pin Set D6
 Notes on Use and Installation
 m = 134.0 g

1 set

0.0.632.87



Hinge Leaf Profile V 10 z



Al, anodized
 m = 0.84 kg/m

natural, cut-off max. 3000 mm

0.0.632.92

natural, 1 pce., length 3000 mm

0.0.632.84

On a roll.

Castor and connector in one



Castors D100 swivel and Castors D125 swivel with Connecting Plate




The swivel castor range with integrated connecting plates that fit directly onto the profile groove.

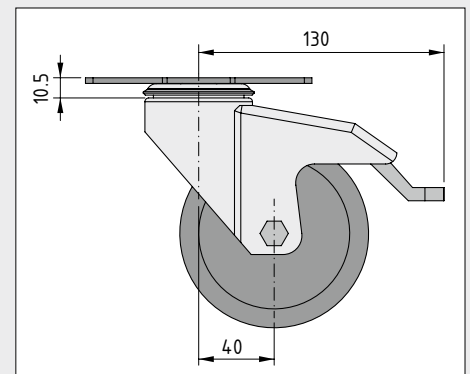
The item D100 and D125 swivel castors are now available in a version with connecting plate. The three holes in the modular dimension of 40 mm make it easy to screw the castors to the profile grooves or the core bore of Profiles 8.

The swivel castors with connecting plate are ideal for use with profile frames built from Line 8 and Line 10. They are the same height as the swivel castors with fixing holes and can also be combined with fixed castors in the corresponding castor size.

All the designs are also available in antistatic/electrostatically dissipative versions for ESD applications.

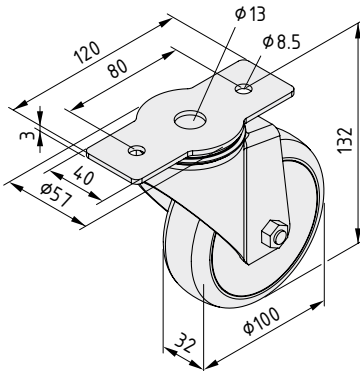
Recommended screws for fastening to the profile groove:

 8	Button-Head Screw M8x14	8.0.000.18
 10	Button-Head Screw M8x18	8.0.000.02
 12	Button-Head Screw M8x20	8.0.009.11



The following applies to all the products below:

Steel sheet casing bright zinc-plated, black
 Swivelling axis with sealed ball bearing,
 Wheel axis with sealed ball bearing,
 Dust shield, carrying capacity 80kg/castor
 Tyre TPE, track-free, 80 Sh A, grey

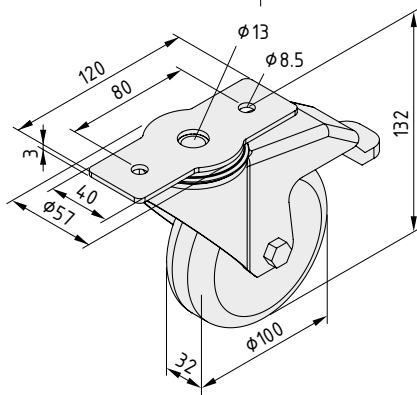


Castor D100 swivel 120x40

m = 641.0 g	
1 pce.	0.0.633.43

Castor D100 swivel 120x40 antistatic

m = 654.0 g	
1 pce.	0.0.633.44



Castor D100 swivel with double-brake 120x40

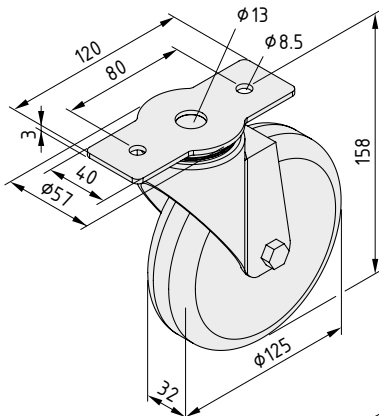
m = 761.0 g	
1 pce.	0.0.639.13

Castor D100 swivel with double-brake 120x40 antistatic

m = 773.0 g	
1 pce.	0.0.633.45

The following applies to all the products below:

Steel sheet casing bright zinc-plated, black
 Swivelling axis with sealed ball bearing,
 Wheel axis with sealed ball bearing,
 Dust shield, carrying capacity 100 kg/castor
 Tyre TPE, track-free, 80 Sh A, grey

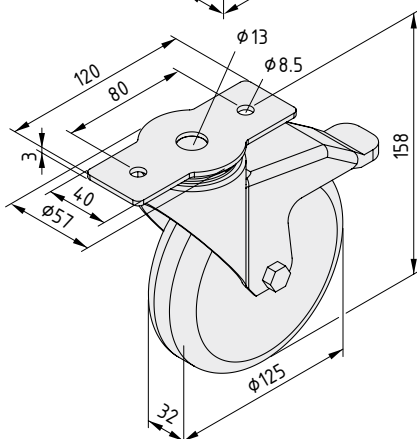


Castor D125 swivel 120x40

m = 704.0 g	
1 pce.	0.0.633.46

Castor D125 swivel 120x40 antistatic

m = 725.0 g	
1 pce.	0.0.633.47



Castor D125 swivel with double-brake 120x40

m = 831.0 g	
1 pce.	0.0.633.48

Castor D125 swivel with double-brake 120x40 antistatic

m = 851.0 g	
1 pce.	0.0.633.49

Individual wheel support.



Castor Support 8 80x40

Reduced construction height = low centre of gravity = increased stability.

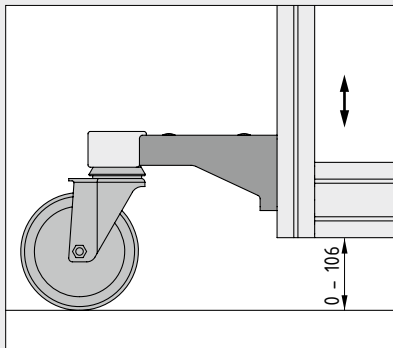
The perfect equation for mobile applications thanks to the new Castor Support 8 80x40.

For fitting D100 or D125 swivel castors (with single central fixing holes), including versions with double-brakes. Castors are always able to rotate around the full 360°.

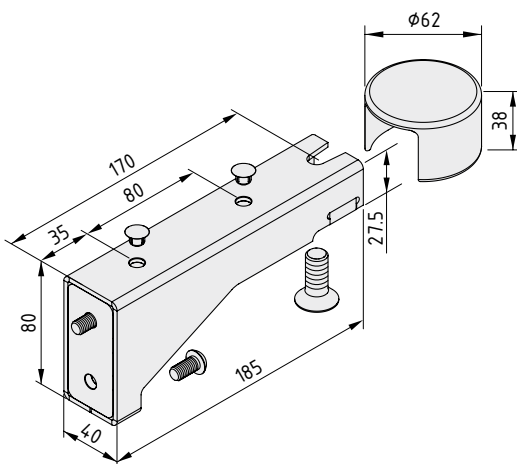
Perfect for connection to Profiles 8 80x40. Simply drive M8 threads into the core bores and the Castor Support can be connected in a matter of seconds. All the necessary fastening elements are included in the set – getting constructions on the go fast.



Safety built in – series-standard elastomer impact protection prevents damage and injuries if an accident happens.



Castor Support 8 80x40 ensures that your construction has a low centre of gravity.



Castor Support 8 80x40



- Castor arm, St, white aluminium
- Impact Buffer, PUR, grey
- 2 Button-Head Screws ISO 7380-M8x16, St, bright zinc-plated
- Countersunk Screw DIN 7551-M10x25, St, bright zinc-plated
- 2 protective plugs, PE, grey
- m = 750.0 g

1 set

0.0.642.76

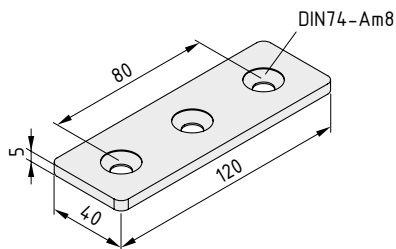
Bridging the grooves.



Bracket 8 120x40 flat

A long bracket brings flexibility! When setting up manual interlinking systems, working with adjustable conveyor systems and creating parallel connections, Bracket 8 120x40 flat creates a secure connection between three grooves in the modular dimension of 40 mm.

When installed, the screws in the fastening set (350.17) lie flush with the bracket.



Bracket 8 120x40 flat

St
m = 173.0 g
black, 1 pce.

0.0.640.54

Fastening Set 8 for Angle Bracket 8 40 / Bracket 8 40 flat

1 Countersunk Screw DIN 7991-M8x14, St, black
1 T-Slot Nut 8 St M8, bright zinc-plated
m = 16.0 g

1 set

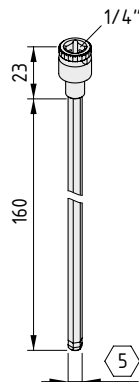
0.0.350.17



Keeping it tight.

Key Insert 5 A/F

The key for item profile connections with a hexagon socket in a key width of 5. Optimised for Universal-Fastening Sets 8 and Automatic-Fastening Sets 8. The special shape of the tip enables users to turn the key from outside the groove, ensuring that tightening our best fasteners is effortless. With a 1/4" square shaft for use with torque keys.



Key Insert 5 A/F


Chrome vanadium steel, matt chrome-plated
 m = 39.0 g
 chrome-plated, 1 pce.

0.0.644.68



Safe cornering.

Kink prevention for cables and leads



Conduit Inside Corners

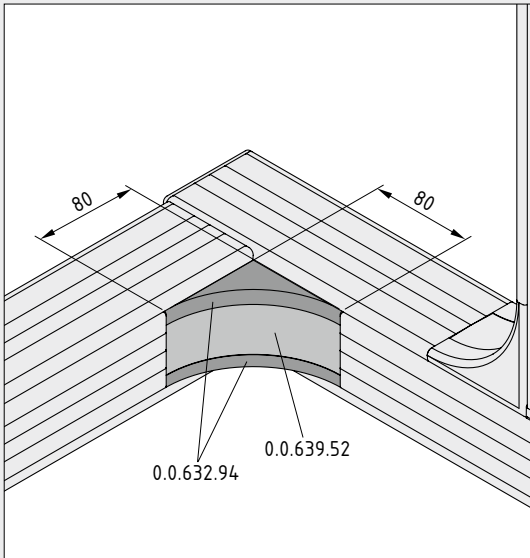
Safe cornering! It's just as important to cable conduits as it is on the roads.

The Conduit Inside Corners for modular cable conduits improve the reliability of cable laying in three ways:

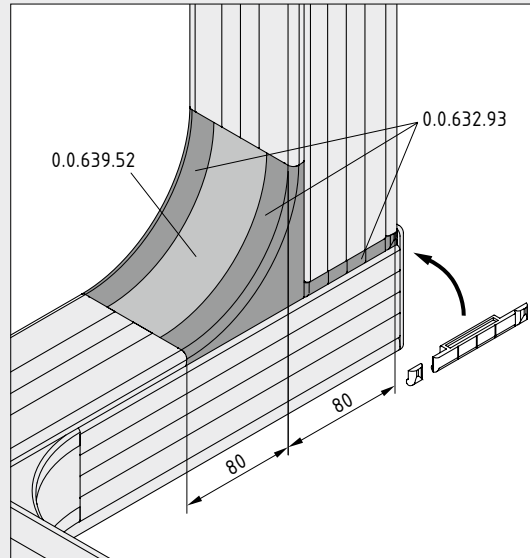
- By preventing kinks in cables and hoses
- By covering cut edges inside the conduit to protect cables
- By creating a smooth transition between Wall Profiles and Support Profiles to protect hands

The Conduit Inside Corner sets for lids and walls include all the components needed to create a corner in a conduit with a wall or lid measuring 40 mm.

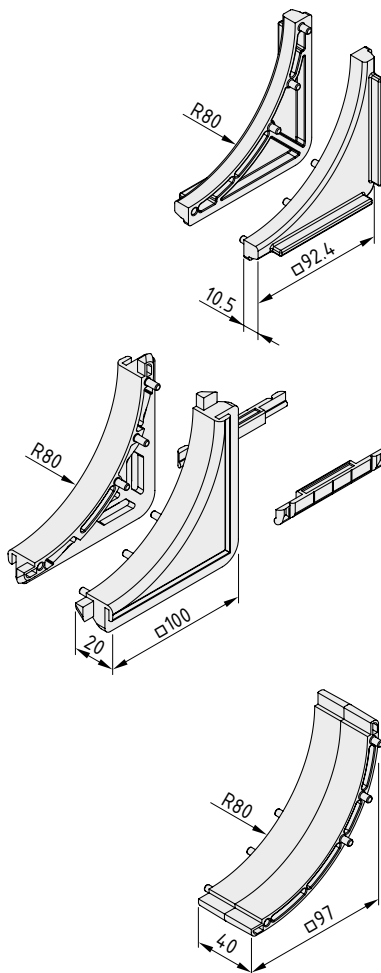
Filler Pieces measuring 40 mm wide are used to extend the height or width of inside corners. As a result, modular conduits up to 160 mm can be fitted with Conduit Inside Corners.



Conduit Inside Corner, Wall on modular conduits, wall height 80 mm:
The wall profiles are each shortened by 80 mm.



Using the Conduit Inside Corner, Lid:
The width of 80 mm is achieved using a Filler Piece.
The cut edge coverings need to be shortened accordingly at one end.



Conduit Inside Corner, Wall

2 inside corners, wall, PA-GF
m = 66.0 g

black, 1 set

0.0.632.94

Conduit Inside Corner, Lid

2 inside corners, lid, PA-GF
2 cut edge coverings, PA-GF
m = 105.0 g

black, 1 set

0.0.632.93

Conduit Inside Corner Filler Piece

PA-GF
m = 50.0 g

black, 1 pce.

0.0.639.52



Safe passage.

Conduit Caps with Cable Entry Protector

No more fiddly edge protection that flies off every time cabling is changed.

The systematic closure for all cable conduits with a screw channel for fastening Caps (Conduits SE 40x40 and SE 80x80 and the Modular Conduit System).

Two-part Conduit Caps with Cable Entry Protector remain attached to the conduit, but still allow additional cables or hoses to be added or removed. Once the Lid Profile has been replaced, the removable part of the cap safely covers the edge of the lid and protects the cables within the conduit.

Recommended screws: Self-Tapping Screw DIN 7981 St 4.2x9.5 (8.0.000.13).

Cable Entry Protector Wall

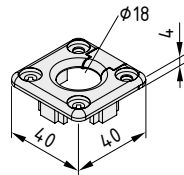
The added benefit of the Modular Conduit System:

The Wall Profiles can be cut out wherever necessary so that lines can be fed into the conduit.

A Cable Entry Protector covers the sharp cut edges of the profiles, thereby protecting cables and hoses as they emerge from the conduits.

Cable Entry Protectors Wall are now available for Wall Profiles in heights of 120 and 160 mm. At 80 mm wide, the protectors create a gap measuring 80x60 mm or 120x60 mm that is protected on all sides.

Do you need the opening in the conduit wall to be wider? No problem! The new Cable Entry Protectors Wall can be split in two and extended to any width in combination with Conduit Edge Profile (0.0.411.58).

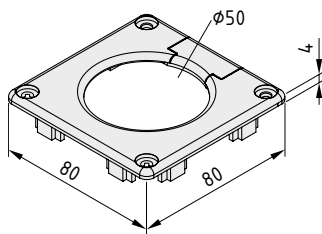


Conduit Cap 40x40 with Cable Entry Protector

PA-GF
m = 8.0 g

black, 1 set

0.0.638.31

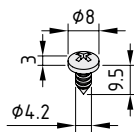


Conduit Cap 80x80 with Cable Entry Protector

PA-GF
m = 23.0 g

black, 1 set

0.0.638.39

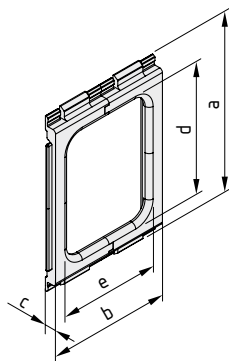


Self-Tapping Screw DIN 7981 St 4.2x9.5

St
m = 1.3 g

bright zinc-plated, 1 pce.

8.0.000.13



Cable Entry Protector Wall 120-80

PA-GF

a [mm]	b [mm]	c [mm]	d [mm]	e [mm]	m [g]
116	80	7.6	80	60	32.0

black, 1 set

0.0.642.93

Cable Entry Protector Wall 160-80

PA-GF

a [mm]	b [mm]	c [mm]	d [mm]	e [mm]	m [g]
156	80	7.6	120	60	38.0

black, 1 set

0.0.642.94



Line D30 – new options for your lean production systems

The D30 cylindrical tube system with its practical fastening technology can now do even more. From simple shelves and variable work stations to complex loading and unloading constructions with roller conveyors – D30 adapts perfectly to on-site requirements and makes lean production more efficient.

And D30 now brings a bit more colour to this efficiency. Profile Tubes D30 are available in seven different colours. This makes it far easier to mark out locations, components and quantities, thereby ensuring everyone can see where everything is at a glance. And the abrasion-resistant powder coating is more than capable of withstanding day-to-day stresses and strains.

item is making Line D30 even stronger with Profile Tube D30 heavy duty. The thicker outer wall of this

profile can take a lot more punishment – which is useful in protecting against buckling and profile deflection and absorbing vibrations. By contrast, Tube KH D30x11.6 contains no metal whatsoever. It is made of an innovative composite material comprising 70 percent wood. The Tube is as easy to saw as wood and is electrically insulating and weatherproof. This makes it an interesting alternative for applications where aluminium is not the ideal material.

Tube Protector D30x13 is perfect for preventing scratches and deadening impacts. This 13 mm-thick PE foam cladding protects products from mechanical damage and can withstand prolonged exposure to mineral oil, acids and alkalis thanks to its closed-cell microstructure. The Table-Top Fastening Set and Table-Top Fastening Bracket make designing tables














and shelves easy. Either permanently fix chipboard or multi-ply panels in place with screws or slot them in securely to allow users to change their position with ease.

Meanwhile, Roller Conveyor St, Fastening Bracket U/I D30 keeps goods on the move by providing a stable bridge between two roller conveyors if gradients change. The key is that the connection remains flexible, allowing users to quickly alter the angle as and when necessary.

The new Label Profiles D30 keep everyone on track. Removable cards are easily inserted into the transparent holders, which are either mounted directly on the tube or suspended from them.

The new products in Line D30 at a glance:

-  **30** Profile Tubes D30, coloured
-  **32** Profile Tube D30 heavy duty
-  **33** Tube KH D30x11.6
-  **34** Tube Protector D30x13
-  **35** Tube End Cap D30
-  **36** Transverse Fastener D30
-  **38** Tube Holder D30
-  **40** Hook and Holder Adapter D30
-  **42** Table-Top Fastening Set D30
-  **44** Label Holder D30
-  **48** Roller Conveyor St, Support D30, Roller Conveyor St, End Cap



Keeping it colourful.

Profile Tube D30, coloured

Tube designs now in glorious colour! Profile Tubes D30 in seven different colours can be used to ensure personnel can readily identify differences between areas and parts, site boundaries and qualities.

The silk-matt powder-coating is durable and abrasion resistant and has no detrimental effects for fastening elements.

Profile Tubes coated in black are ESD-safe. This ensures that personnel can immediately tell where sensitive parts are safe.



Profile Tube D30

Al, anodized

A [cm ²]	m [kg/m]	I _x [cm ⁴]	I _y [cm ⁴]	W _x [cm ³]	W _y [cm ³]	
1.97	0.53	1.71	1.71	1.14	1.14	
red similar to RAL 3020, cut-off max. 6000 mm						0.0.643.22
red similar to RAL 3020, 1 pce., length 6000 mm						0.0.643.14
yellow similar to RAL 1021, cut-off max. 6000 mm						0.0.643.23
yellow similar to RAL 1021, 1 pce., length 6000 mm						0.0.643.15
green similar to RAL 6024, cut-off max. 6000 mm						0.0.643.24
green similar to RAL 6024, 1 pce., length 6000 mm						0.0.643.16
blue similar to RAL 5017, cut-off max. 6000 mm						0.0.643.25
blue similar to RAL 5017, 1 pce., length 6000 mm						0.0.643.17
grey similar to RAL 7042, cut-off max. 6000 mm						0.0.643.26
grey similar to RAL 7042, 1 pce., length 6000 mm						0.0.643.18
white similar to RA L 9016, cut-off max. 6000 mm						0.0.643.27
white similar to RA L 9016, 1 pce., length 6000 mm						0.0.643.19



Profile Tube D30 ESD

Al, anodized

A [cm ²]	m [kg/m]	I _x [cm ⁴]	I _y [cm ⁴]	W _x [cm ³]	W _y [cm ³]	
1.97	0.53	1.71	1.71	1.14	1.14	
black, similar to RAL 9005, cut-off max. 6000 mm						0.0.643.29
black, similar to RAL 9005, 1 pce., length 6000 mm						0.0.643.21



Strong.

Extreme torsion resistance

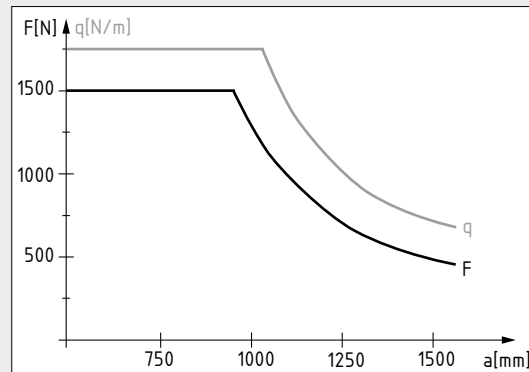
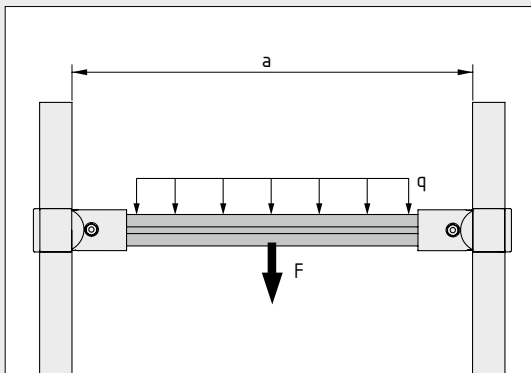


Profile Tube D30 heavy duty

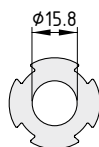
Built to last – Profile Tube D30 heavy duty is used in applications with tough requirements. Low profile deflection, vibration absorption and increased buckling resistance – that is when this profile really comes into its own.

Threaded bores can be introduced into the reinforced wall of the Profile Tube, which enables users to create direct screw attachments.

On the outside, however, it looks no different from its conventional counterpart and has the same contour as Profile Tube D30. As a result, all the usual connection and fastening principles in Line D30 apply in full and all components are used in the same way.



Permissible loads for profile constructions built with Profile Tube D30 heavy duty.



Profile Tube D30 heavy duty

Al, anodized

A [cm ²]	m [kg/m]	I _x [cm ⁴]	I _y [cm ⁴]	W _x [cm ³]	W _y [cm ³]
4.67	1.21	3.06	3.06	2.04	2.04
natural, cut-off max. 6000 mm					0.0.642.34
natural, 1 pce., length 6000 mm					0.0.642.33

Renewable plastic.

70 percent wood content

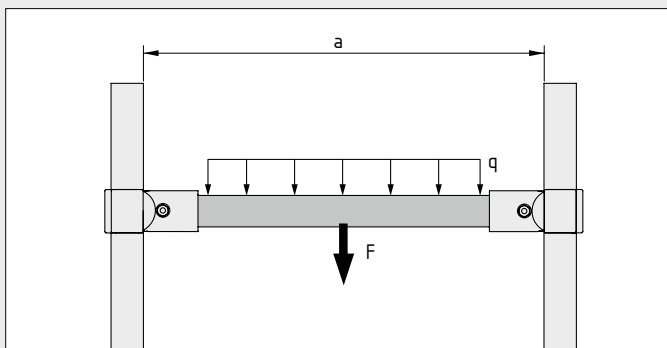
Innovative material

Tube KH D30x11.6

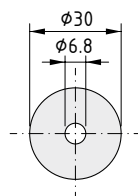
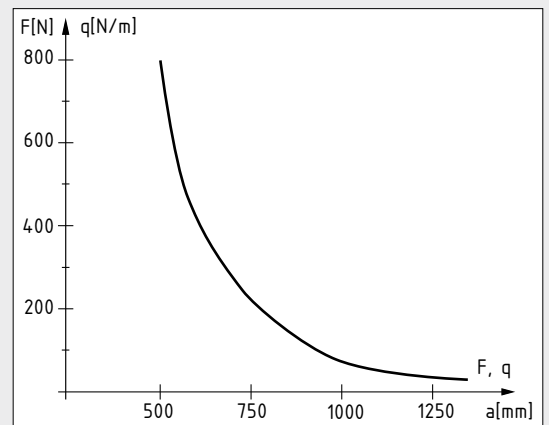
The alternative for all tube constructions that need to be electrically non-conductive and transparent to radio frequencies. Stable, weatherproof and made predominantly of renewable raw materials (> 70% wood), this innovative composite material is also suitable for users who need tubes that are easy to process and versatile. The wall thickness of 11.6 mm also means that panel elements can be screwed directly to the tube wall using wood screws.

Fastener D30 and a Tube Adapter D30 are used to create connections with Tubes KH D30x11.6 in exactly the same way as for aluminium Tubes D30.

To create end-face connections, Button-Head Screw KH 8x55, TX 30 (0.0.642.17) can be driven into the core bore of Tube KH without the need for any preliminary machining.



Permissible loads for profile constructions built with Tube KH D30x11.6 heavy duty.



Tube KH D30x11.6

A [cm ²]	m [kg/m]	I _x [cm ⁴]	I _y [cm ⁴]	W _x [cm ³]	W _y [cm ³]	
6.71	0.77	3.97	3.97	2.65	2.65	
anthracite, cut-off max. 6000 mm						0.0.643.71
anthracite, 1 pce., length 6000 mm						0.0.643.70

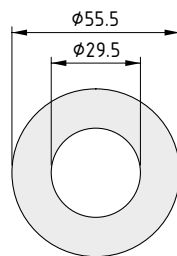
Protection.

Made from durable flexible PE foam

Impact and scratch protection

Tube Protector D30x13

Scratch protection and impact absorption for all constructions made using item Line D30. The cladding consists of 13 mm-thick PE foam with exceptional elastic properties. The closed-cell material protects products from mechanical damage and can withstand prolonged exposure to mineral oil, acids and alkalis. Easy to fit: Either insert the (Profile) Tube D30 into the Tube Protector or fit the Tube Protector around tubes that have already been built into a construction. To ensure a secure hold around Tubes D30, a Tube Protector D30x13 that has been split open along its length should be held shut with cable ties or adhesive tape.



Tube Protector D30x13

PE, foamed
m = 60 g/m

grey, 1 pce., length 2000 mm

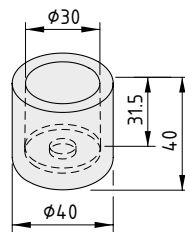
0.0.641.23

Bringing it to an end.

Tube End Cap D30

Added safety with Tube End Cap D30: As a flexible cap for the open end of a Tube D30 or as scratch protection for floors or walls.

The Tube End Cap is also available in an electrostatically dissipative design (black).



Tube End Cap D30

Cap, NBR Sh 60 A
Washer, St, bright zinc-plated
m = 47.0 g

grey, 1 set

0.0.643.96

Tube End Cap D30 ESD



Cap, NBR Sh 60 A ESD
Washer, St, bright zinc-plated
m = 47.0 g

black, 1 set

0.0.644.65

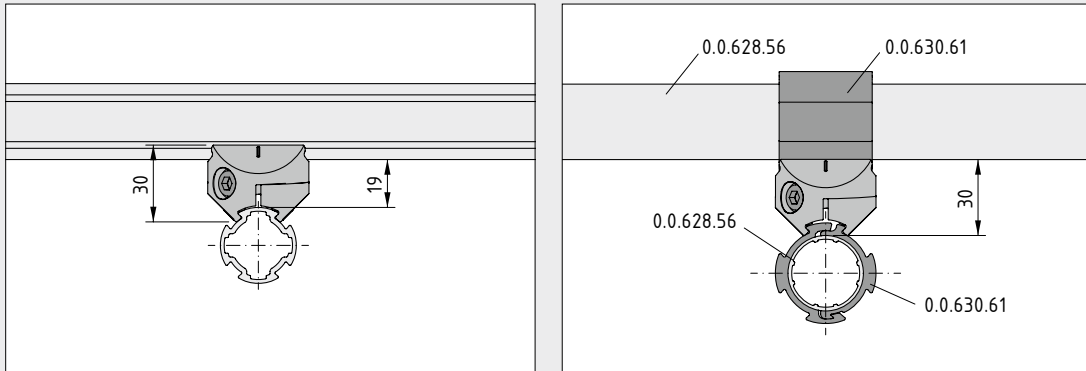


Clamping connection.

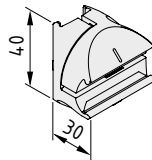
No profile processing necessary

Transverse Fastener D30

A fastener with a firm grip. Transverse Fastener D30 connects two Profile Tubes at a 90° angle to each other. The two-part fastener enables users to connect together Profile Tubes without disassembly. Simply clamp the Transverse Fastener onto both Profile Tubes and then tighten it. The tightened fastener holds the Profile Tubes together and positive locking provides added support for the load-carrying profile connection.



Using Transverse Fastener D30 on two Tubes D30 with Tube Adapter D30.
 Profile Tubes D30 are connected with a gap of 19 mm. When using Tube Adapter D30, this gap increases by 5.5 mm on each side.



Transverse Fastener D30

2 fastener halves D30, die-cast aluminium, natural
 Washer, St, bright zinc-plated
 Hexagon Socket Head Cap Screw DIN 912 M6x28, St, bright zinc-plated
 Hexagon nut DIN 934 M6, St, bright zinc-plated
 Compression spring, St, stainless
 m = 65.3 g

1 set 0.0.637.90



Cap D30 R

PA-GF
 m = 0.3 g
 grey similar to RAL 7042, 1 pce.

0.0.624.11



When round meets square.



Tube Holder D30

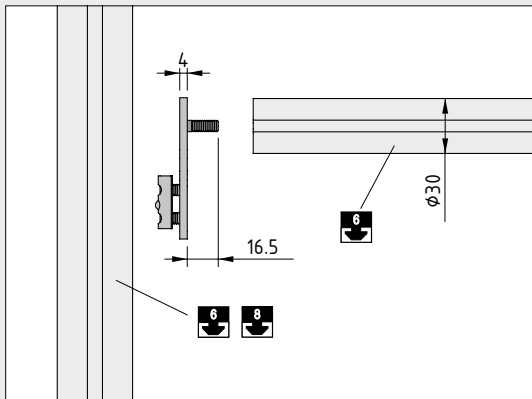
A stable connection. A strong, space-saving solution for fastening a (Profile) Tube D30 between two profiles from the item MB Building Kit System. Tube Holder D30 is available in two designs for screwing Tubes directly to Profile 6 or Profile 8 grooves.

An M6 screw makes the connection with (Profile) Tube D30:

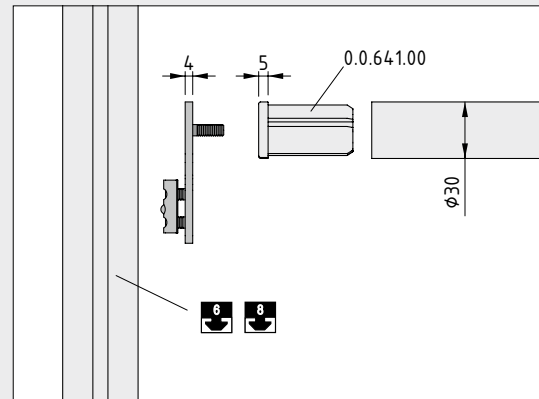
- Using Threaded Insert D30 M6 in Tube/Profile Tube D30
- Via a direct screw connection with an M6 thread in the core bore of Profiles 6 D30



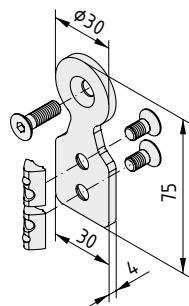
When round meets square.
 Making it easy to connect the Line D30 with Line 8 or Line 6.
 This solution makes it possible to use the cylindrical tube system of Line D30 to extend or reinforce a conventionally designed application based on the MB system.



When using Profile 6 D30, an M6 thread is cut directly into the core bore.



When using Tube D30 (0.0.628.56) or Profile Tube D30 (0.0.628.28), the M6 thread is provided by Threaded Insert D30 M6 (0.0.641.00).



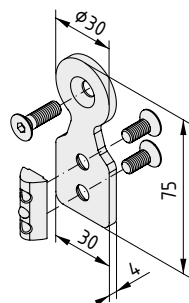
Tube Holder 6 D30



- Bracket D30 flat, St
- 2 T-Slot Nuts 6 St M6
- 2 Countersunk Screws DIN 7991-M6x12, St
- Countersunk Screw DIN 7991-M6x20, St
- m = 69.0 g

bright zinc-plated, 1 set

0.0.642.23



Tube Holder 8 D30



- Bracket D30 flat, St
- Special T-Slot Nut F 8 St M6
- 2 Countersunk Screws DIN 7991-M6x14, St
- Countersunk Screw DIN 7991-M6x20, St
- m = 71.0 g

bright zinc-plated, 1 set

0.0.642.05



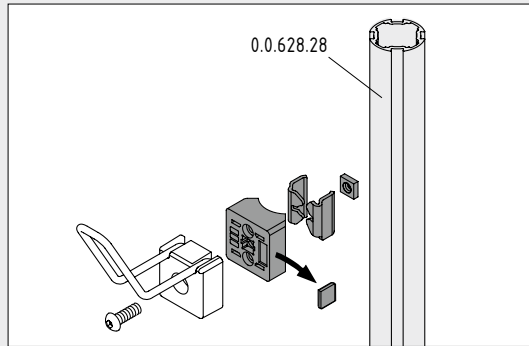
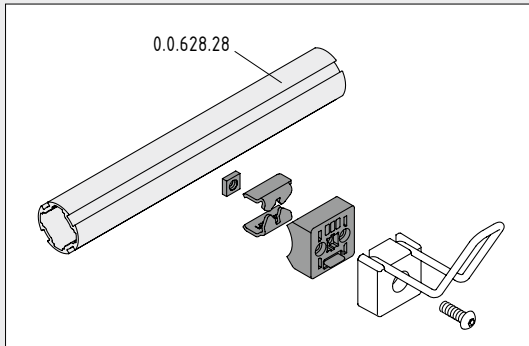
Clear workspace, clear mind.

Hook and Holder Adapter D30

Multifunctional and award-winning design (iF 2011 Gold Award, German Design Award 2012) – the item hooks and holders storage system combines form and function.

Hook and Holder Adapter D30 now brings this functionality to all Line D30 applications. It allows users to fasten any hook or holder they wish to (Profile) Tubes D30 via the central tensioning screw.

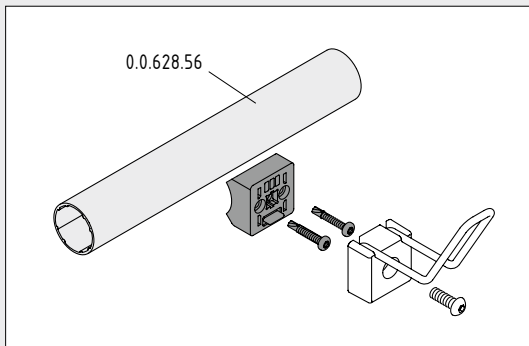
As a result, rapid access to tools and materials is now possible on all constructions built using Line D30.



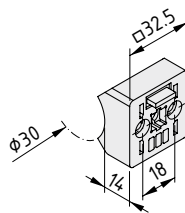
The retaining plates are used when fastening the adapter to a Line D30 Profile Tube. They utilise the outer profiling and fasten the adapter so that it can be easily positioned.

Recommended tightening torque for fastening screw:
M = 5 Nm.

When using the adapter with vertical struts, the removable anti-torsion feature must be taken out prior to assembly.



The adapter can also be fastened to Tube D30 (0.0.628.56). Self-tapping screws (0.0.644.99) are used in this case. The retaining plates must be removed from the adapter.



Hook and Holder Adapter D30

Adapter D30, PA-GF, black
2 plates, St, bright zinc-plated
Square nut DIN M6-04, St, bright zinc-plated
m = 54.0 g

1 set

0.0.645.27

Button-Head Screw, self-threading St 3.9x25, TX 20

St, bright zinc-plated
m = 30.0 g

1 pce.

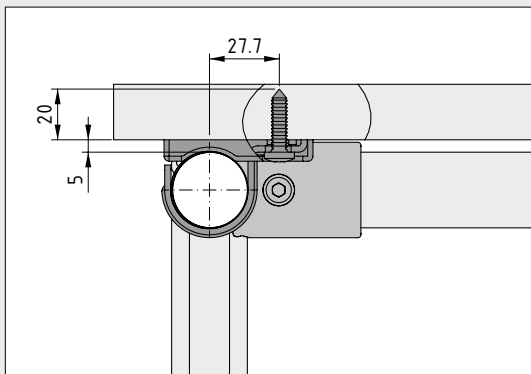
0.0.644.99



Top table.

Table-Top Fastening Set D30

The robust fastening for connecting table tops made from chipboard or multi-ply panels to tube constructions built with Line D30. Positioned in an instant and tightened with the self-tapping screw. A steel clip produces a stable and strong fastening while a plastic spacer protects the parts that are connected together.



The clip is laid over the Tube D30 and fastened directly to the table top with the included screw, which is driven through the plastic spacer.

The plastic spacer beds the clip in place and creates the 5 mm gap made necessary by the use of Fasteners D30.

Note: Slide Strip D30 (0.0.634.55 ESD or 0.0.634.42) can be used to cover the gap between the table top and Profile Tube.

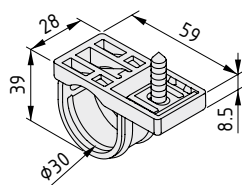


Table-Top Fastening Set D30

Sheet material, St, bright zinc-plated

Spacer, PA-GF, black

Screw 6x25-TX30, self-tapping, St, bright zinc-plated

m = 65.0 g

1 set

0.0.646.91



Support from below.

Table-Top Fastening Bracket D30

The rapid solution for supporting horizontal panels. Position a Table-Top Fastening Bracket in each corner of a D30 frame and place on top any panel material – that's all it takes to create load-carrying shelving for storage systems or workpiece carriers, etc.

If required, the Table-Top Fastening Bracket D30 can also be screwed to the panel, thereby further stabilising the frame.

The table top is simply slotted into a frame made of Tubes D30 or Profiles D30.

Fasteners D30 require an all-round gap of 5 mm that should be taken into account when cutting the panel to size.

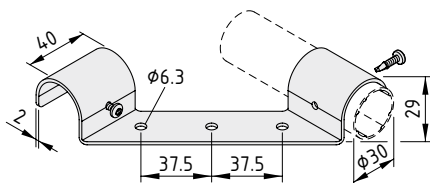
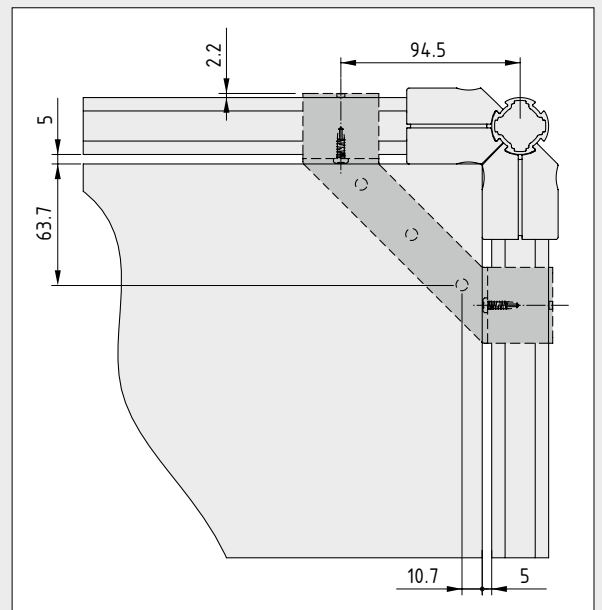


Table-Top Fastening Bracket D30

Sheet Material, St, bright zinc-plated
2 Button-Head Screws, self-tapping St 3.9x16, TX 20

m = 141.0 g

bright zinc-plated, 1 set

0.0.647.11

42

Place cards.



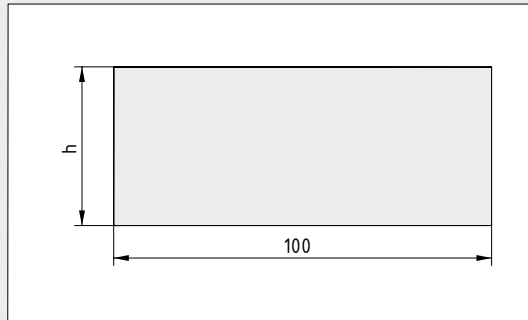
Label Holder D30

Clear markings keep everyone on track. Legible and fixed labels reduce error rates and increase efficiency.

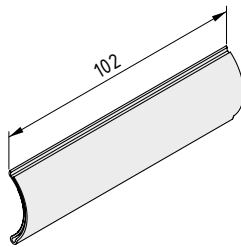
The Label Holders enable users to attach labels to Profiles and Tubes by keeping labelling cards securely encased in transparent film.

Two versions are available – one for attaching labels directly to the tube and one for suspending labels below the tube in a flexible transparent pocket (“flex” version). Both are permanently glued to the tube.

Label Holders D30 are available ready-cut in lengths of 100 mm or as a profile that can be cut to size as required.



Recommended size of label cards:
 Label Holder D30: h = 28 mm
 Label Holder D30 flex: h = 42 mm

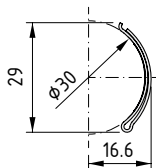


Label Holder D30-100

PVC
 Self-adhesive
 m = 7.0 g

transparent, 1 pce.

0.0.644.69

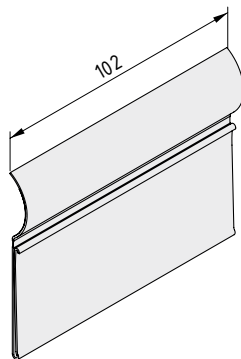


Label Holder D30

PVC
 Self-adhesive
 m = 66.5 g/m

transparent, 1 pce., length 2000 mm

0.0.643.97

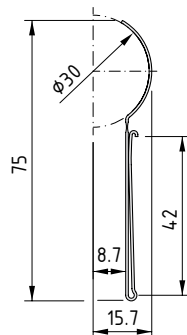


Label Holder D30-100 flex

PVC
 Self-adhesive
 m = 13.0 g

transparent, 1 pce.

0.0.644.71



Label Holder D30 flex

PVC
 Self-adhesive
 m = 128 g/m

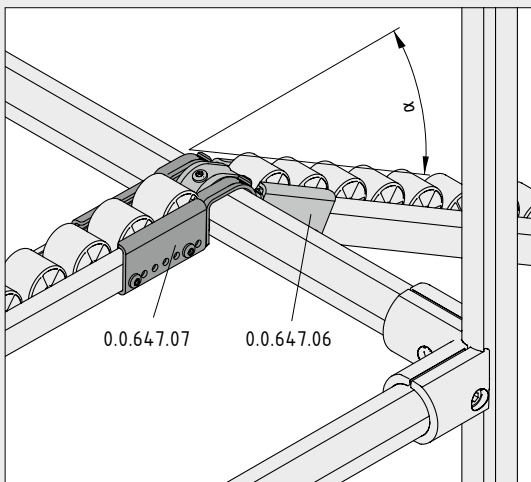
transparent, 1 pce., length 2000 mm

0.0.643.98

Over the edge.

For modern production systems

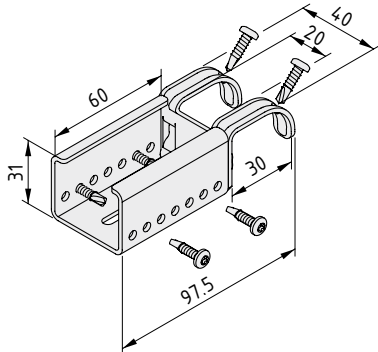
Ideal for Kanban shelves



Roller Conveyor St, Fastening Bracket U/I D30

The bridge between two Roller Conveyors St D30 if gradients change. Fastening bracket I slots into fastening bracket U. The fastening is securely clamped onto a (Profile) Tube D30 and can also be fixed in place using self-tapping screws. The fastener remains flexible, which means that if gradient α should change at a later point in time, it can be adjusted accordingly.

An absolute must when building Kanban shelves.

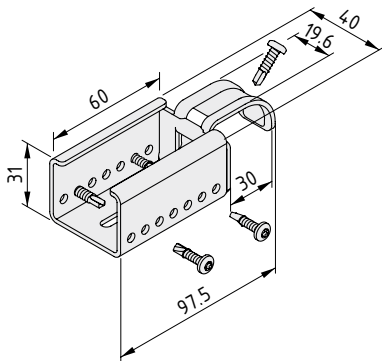


Roller Conveyor St, Fastening Bracket U D30

St, bright zinc-plated
 6 Button-Head Screws, self-tapping St 3.9x16, TX 20
 m = 150.0 g

bright zinc-plated, 1 set

0.0.647.07



Roller Conveyor St, Fastening Bracket I D30

St, bright zinc-plated
 5 Button-Head Screws, self-tapping St 3.9x16, TX 20
 m = 145.0 g

bright zinc-plated, 1 set

0.0.647.06



Strong support.

Roller Conveyor St, Support D30

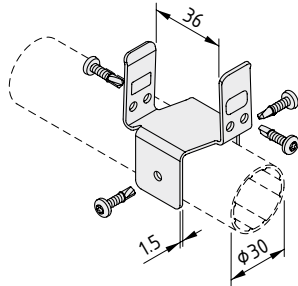
Sometimes support is essential. Even in the case of Roller Conveyors St D30, it can be useful to fit a stabilising D30 strut to counter excessive profile deflection when working with heavy loads.

In such circumstances, Support D30 makes sure that the roller conveyor doesn't move out of alignment. Screwed to the cross profile, they can also fit anywhere along the length of the roller conveyor so that subsequent adjustment work can be carried out as and when required.

Roller Conveyor St, End Cap

Safety first! The sharp edges at the ends of exposed roller conveyors no longer need to be filed down to prevent cuts and other damage and injuries. Simply slot on the robust end cap and secure it in place with the enclosed self-tapping screws – that's all it takes to create permanent edge protection for roller conveyors.

A must for all loading and unloading stations.

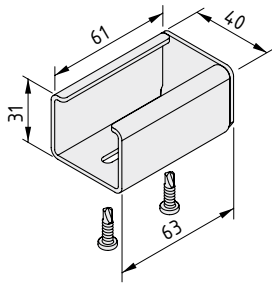


Roller Conveyor St, Support D30

St, bright zinc-plated
 4 Button-Head Screws, self-tapping St 3.9x16, TX 20
 m = 46.0 g

bright zinc-plated, 1 set

0.0.647.10



Roller Conveyor St, End Cap

St, bright zinc-plated
 2 Button-Head Screws, self-tapping St 3.9x16, TX 20
 m = 117.0 g

bright zinc-plated, 1 set

0.0.647.08

Alphabetical Register

A		R	
Angle Bracket 8 PA	8	Roller Conveyor St, End Cap	48
B		Roller Conveyor St, Fastening Bracket U/I D30	44
Bracket 8 120x40 flat	22	Roller Conveyor St, Support D30	48
Button-Head Screw KH 8x55, TX 30	6	S	
C		Standard-Fastening Set KH 8	6
Cable Entry Protector Wall	26	Step Drill D18.2	12
Cap 10 50x20	10	T	
Castor Support 8 80x40	20	Table-Top Fastening Bracket D30	43
Central-Fastening Set 10	12	Table-Top Fastening Set D30	42
Conduit Caps with Cable Entry Protector	26	Transverse Fastener D30	36
Conduit Inside Corners	24	Tube End Cap D30	35
Cover Profile 10 Al	11	Tube Holder D30	38
H		Tube KH D30x11.6	33
Hinges 10 Al light	16	Tube Protector D30x13	34
Hook and Holder Adapter D30	40		
K			
Key Insert 5 A/F	23		
L			
Label Holder D30	46		
P			
Panel-Clamping Strips 10	14		
Profile 10 50x20 E	10		
Profile KH 8 40x40	4		
Profile Tube D30 heavy duty	32		
Castors D100 swivel and Castors D125 swivel with Connecting Plate	18		
Profile Tube D30, coloured	30		

If you require information material, please get in touch with your distribution and service contact. Or you can visit us at our website: www.item24.com

Up-to-date information is available online



Other item product catalogues

Comprehensive Catalogue for
the MB Building Kit System

Catalogue D30

Work bench systems catalogue



Concept, design and realization
item Industrietechnik GmbH,
Technical Documentation Department

Photographs
item Industrietechnik GmbH

Technical modifications and errors reserved.
All rights reserved. Use of texts and illustrations or reprints of
any kind only permitted with our prior written consent. This
applies in particular to reproduction, translation or use in
electronic systems.

item is a registered trademark of item Industrietechnik
GmbH.

© item Industrietechnik GmbH 2011

Patents

Any copying of protected products is a violation of these rights and, as such,
shall be liable to compensation. Data and illustrations in this catalogue do not
discharge the user from the obligation to carry out his own checks to determine
whether the industrial property rights of third parties are infringed.

Product liability

item shall be liable, within the framework of the applicable legal provisions,
for the promised characteristics of the products shown in this catalogue. Any
claims for liability above and beyond such – in particular relating to prod-
ucts created by third parties using products included in this catalogue – are
expressly excluded.

Conditions of use

The products in the item MB Building Kit System are suitable for use in dry
conditions and over the temperature range -20°C to +70°C. item must be
consulted where products are to be used for applications outside these limits.

Conformity with Directive 2002/95/EC ("RoHS")

item has made a voluntary undertaking to refrain from using hazardous sub-
stances as defined in Directive 2002/95/EC in the products it sells, irrespective
of their subsequent purpose which, in the majority of cases, does not fall under
this Directive.

Your distribution and service partner

item

item Industrietechnik GmbH
Friedenstrasse 107-109
42699 Solingen
Germany

Phone +49 212 6580 0
Fax +49 212 6580 310

info@item24.com
www.item24.com

Your ideas are worth it.